

No matter where you live in Oregon,  
you're in a watershed.



OREGON  
WATERSHED  
ENHANCEMENT BOARD

# FIP Overview

A “Focused Investment Partnership” is an OWEB investment that:

- Addresses a Board-identified priority of significance to the state
- Achieves clear and measurable ecological outcomes
- Uses integrated and results-orientated approaches as identified through a strategic action plan
- Is implemented by a high performing partnership

# OWEB Board-Identified FIP Priorities

- Sagebrush/Sage-Steppe Habitat
- Oregon Closed Lakes Basin Wetlands Habitat
- Dry-Type Forest Habitat
- Oak Woodland and Prairie Habitat
- Coho Habitat and Populations Along the Oregon Coast
- Aquatic Habitat for Native Fish Species
- Coastal Estuaries in Oregon

# FIP Program

“An initiative with an existing strategic action plan that is ready for implementation by a high-performing partnership for a period of **up to 6 years and not exceeding \$12 million.**”

A diagram consisting of three nested, rounded shapes. The outermost shape is blue and contains the text 'Strategic Action Plan: Long-Term Conservation Strategy'. Inside it is a larger tan shape containing 'Initiative: Program within the SAP pursuing FIP funding'. The innermost shape is a smaller, darker tan shape containing 'Work Plan: Proposed activities for 6 years'.

**Strategic Action Plan:**  
Long-Term Conservation Strategy

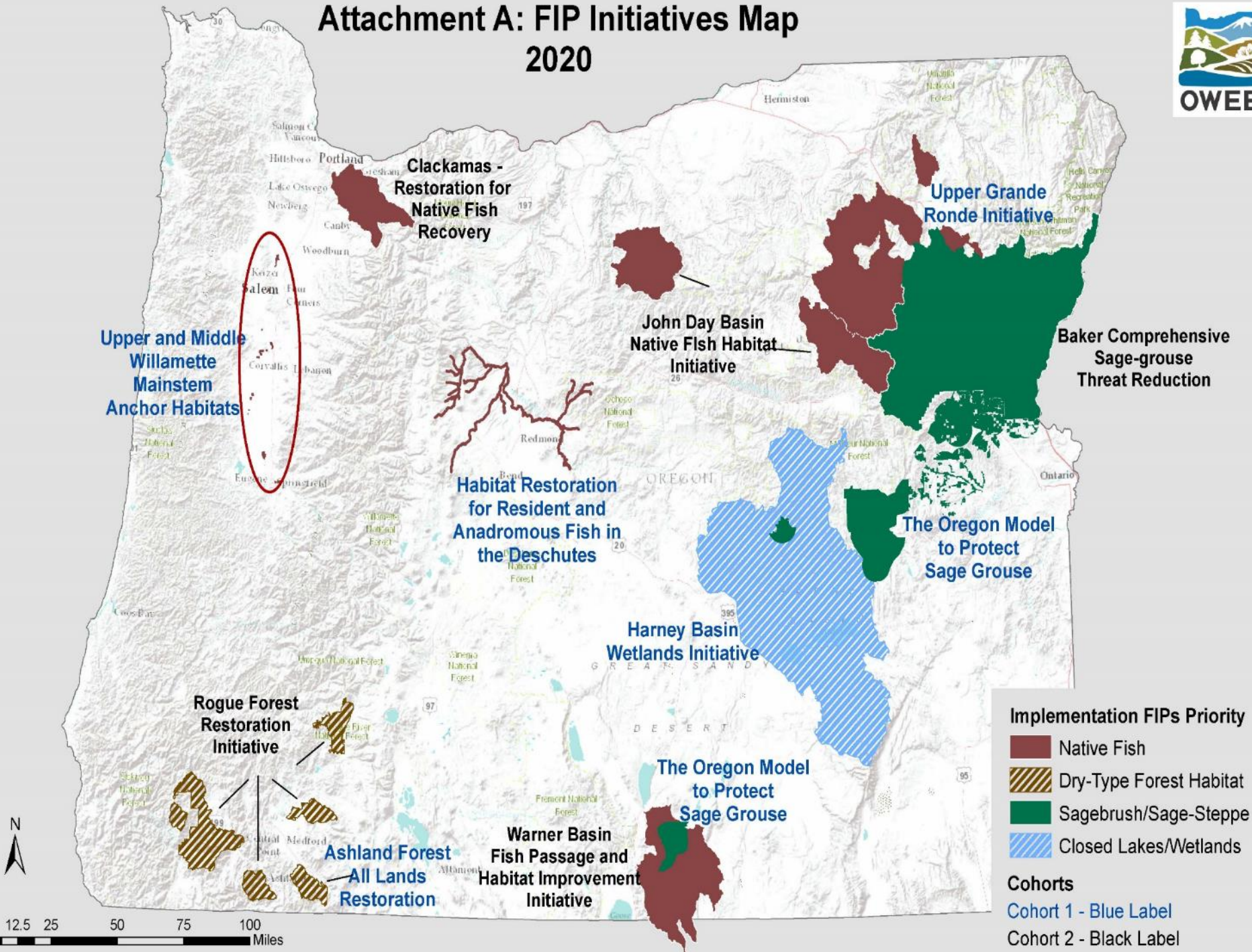
**Initiative:**  
Program within the SAP  
pursuing FIP funding

**Work Plan:**  
Proposed  
activities for 6  
years

# Improving long-term protection through FIPs

- Baker Sage Grouse – Candidate Conservation Agreements
- John Day Basin Native Fish Habitat – Working Lands Easement
- Warner Basin Fish Passage – permanent fish passage barrier removal

# Attachment A: FIP Initiatives Map 2020



# Baker Sage-grouse Comprehensive Threat Reduction Plan FIP.

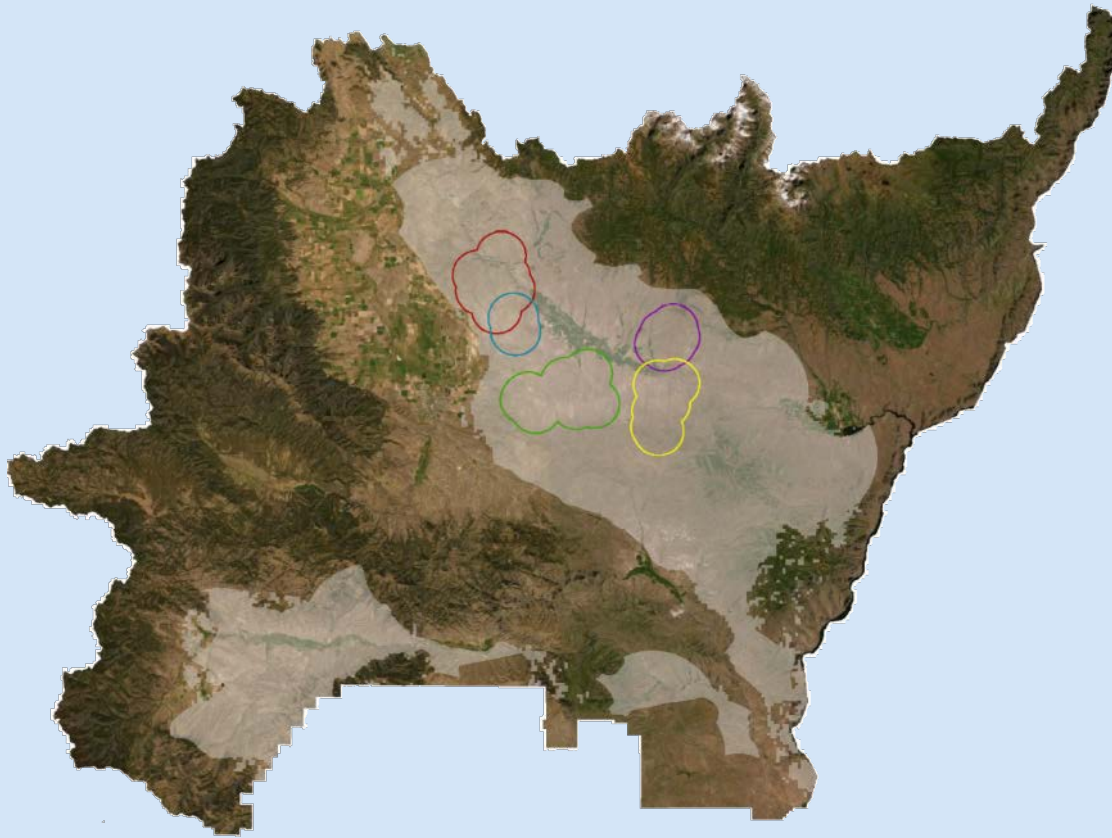


OREGON  
WATERSHED  
ENHANCEMENT BOARD






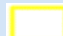

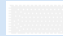
# Purpose of the Initiative

Increase the **quality** and **quantity** of **sage-grouse habitat** and ultimately increase the Baker **sage-grouse population**, by utilizing the following **restoration** strategies:

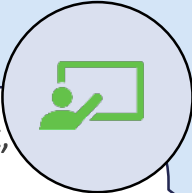
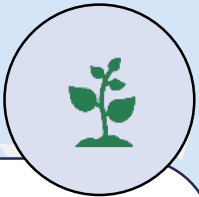


- Treat invasive annual grass and noxious weeds
- Grazing management
- Augment understory vegetation
- Enhance mesic habitat
- Bridge information gaps (predator subsidies, WNV, mesic habitat map)

## Legend

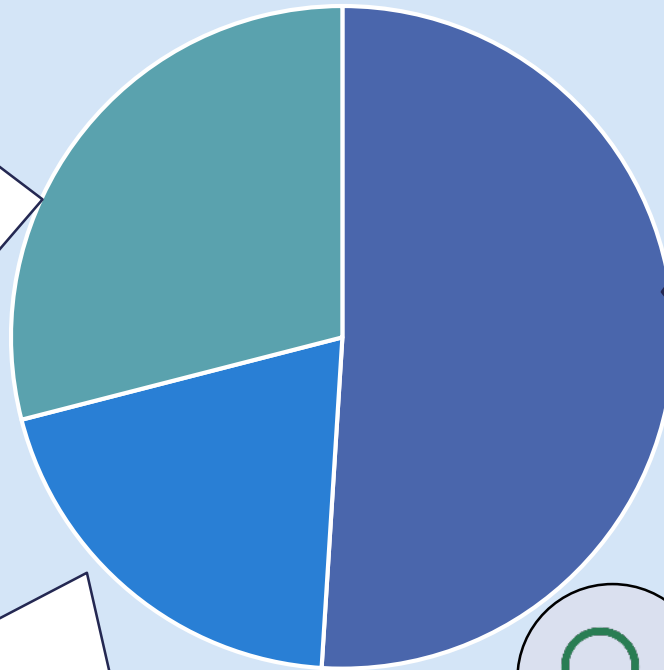
 Fenceline & Crews Creek leks	 Hutton Complex	 Magpie Creek & Guzzler Complexes
 Widman Complex	 Virtue and Water Trough Complexes	 Sage-grouse Habitat

# Three Broad Outcomes



## Education, Engagement, Coordination (29%)

- Landowner meetings (1 large, multiple 1:1)
- Outreach presentations (4)
- Newspaper articles (2)
- Weed booklets printed (5,000)
- Quarterly LIT meetings (5)
- Outreach mailings; quarterly newsletter (5)
- Social media
- LIT Coordinator hired
- CCAA Coordinator hired



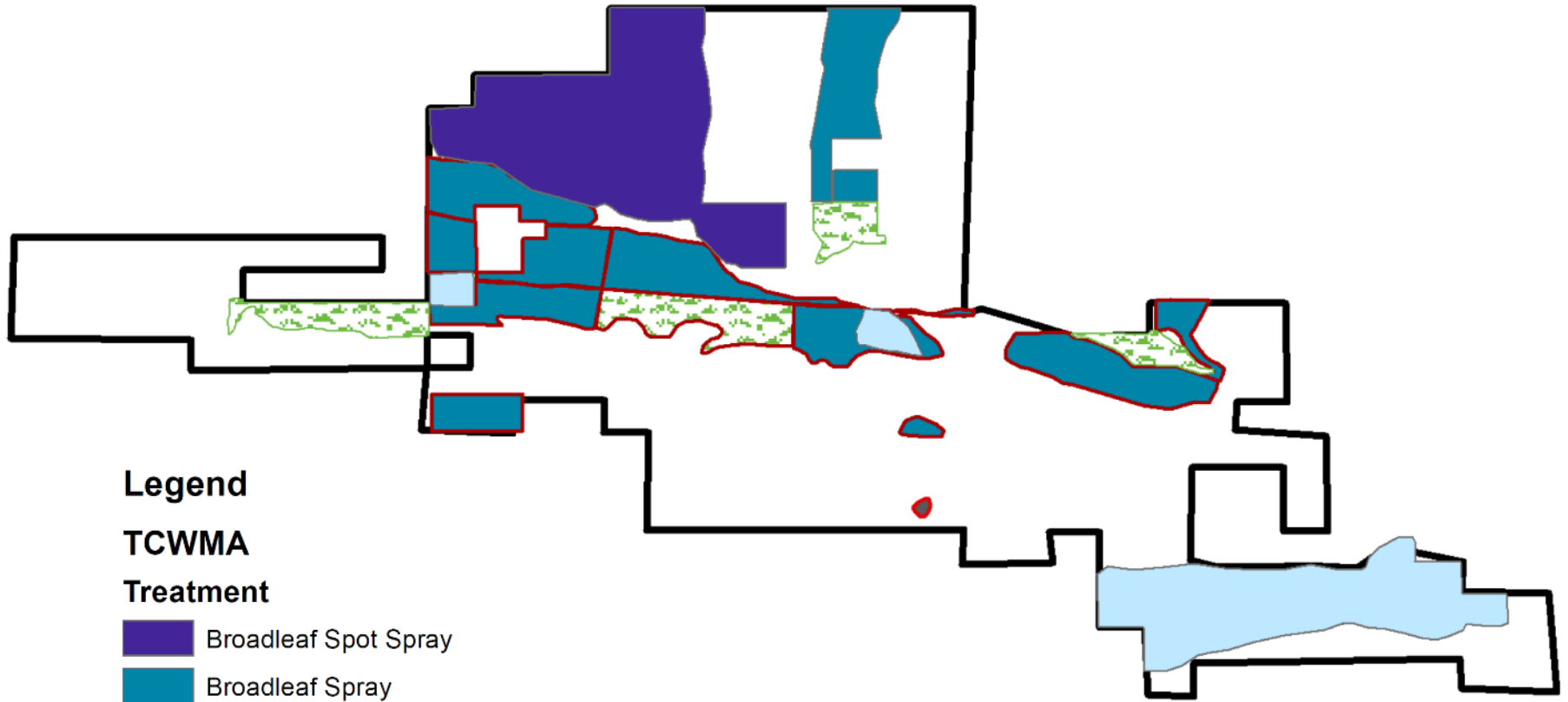
## Bridge Information Gaps (20%)

- 15 additional West Nile virus monitoring sites (2019-2021)
- OSU ongoing research on raven subsidies
- Mesic mapping (expected completion Spring 2021)
- Seasonal position (ground-truth mesic model, Summer 2021)
- Regional Forage Reserve Committee established
- Developing partnerships to address understory conditions

## Vegetation Management (51%)

- Private landowners enrolled in restoration projects (28)
- Weed inventory (26,000 acres)
- Invasive annual grass treatments (3,320 acres)
- Broadleaf weed control (2,635 acres)
- Seeding (850 acres)
- Roadside IAG spraying (160 miles)
- Fending to promote grazing management (6.5 miles)
- Grazing management plan (1 developed)
- Restoration monitoring framework (developed & being implemented)
- OHV wash station preliminary meetings (multiple)
- Wildfire response outreach (unmanned fire lookout)

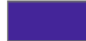
# Love Reservoir




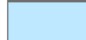
## Legend

### TCWMA

#### Treatment


 Broadleaf Spot Spray


 Broadleaf Spray


 IAG Spray


 Seed

### NRCS

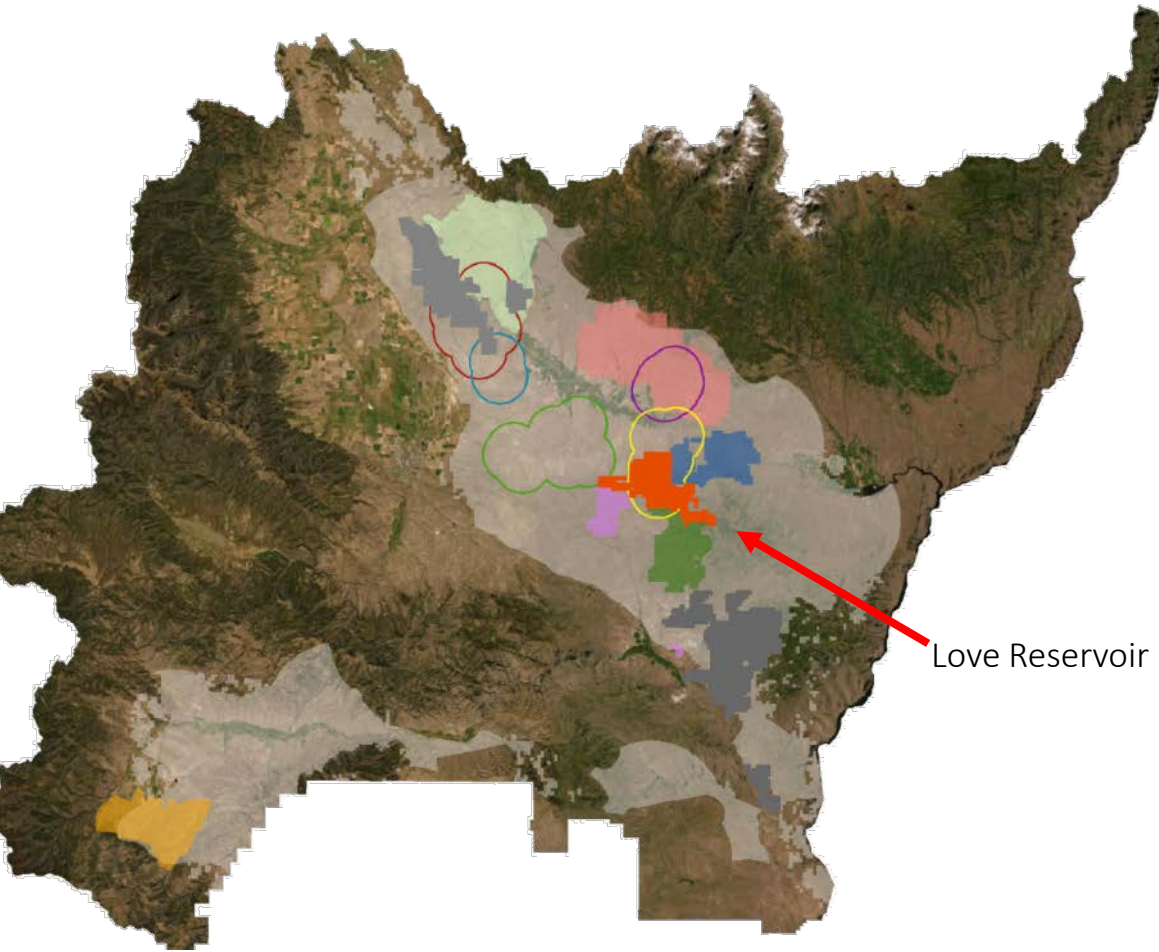
 Brush Management

 Herbaceous Weed Treatment

 Range Planting

 Love Reservoir Project

# Baker LIT Project Selection Criteria:



- Keating Powder River Restoration
- Love Reservoir: IAG Treatment & Seeding
- Lookout 2020
- Glasgow Butte: IAG, Whitetop, Fencing, Grazing
- Harrel & Flack: Aerial Spray TACA

- Medical Springs: Whitetop Containment & Control
- Keating: Yellow starthistle, IAG, Skeletonweed
- Lawrence\_Sardine: IAG & Broadleaf Noxious Weeds
- Unitv: Whitetop Containment and Control (Phase I)



## Tier 1 (high priority)

- ✓ Addresses goal/objectives in the Baker FIP Work Plan
- ✓ Project is located with a 2-mile prioritized lek/complex buffer *and* capitalizes on previous conservation efforts



- ✓ Matching funds (>75%)
- ✓ Value, fiscally sound



- ✓ Coordination with multiple partners, landowners



- ✓ Landowner **willing to follow long-term guidance** to promote success (e.g. grazing management)



- ✓ Supports ongoing CCAA
- ✓ **Technically sound & feasible**
- ✓ Monitoring and reporting

# CCAA & Long-term Habitat Protection

## What is a CCAA?

- Formal agreements USFWS and one or more parties
- Address the conservation needs of at-risk species before ESA-listing
- In return for conservation measures, participating property owners are assured that no additional conservation requirements will be imposed if the covered species becomes ESA-listed

## How are CCAAs integrated into FIP activities?

- **CCAA Coordinator** hired with FIP funds
- **Prioritize** projects with **CCAA-enrolled land**
- **Collaborate** to implement **conservation measures** identified site-specific plans for enrollees
- **Leverage partner funding**

## How does the FIP and CCAA promote long-term maintenance of conservation action?

- **Long-term commitment (30 years)**
- **Adaptive management** of site-specific plans for enrolled land
- **Relationship building** between landowners and local, state, federal agencies



Questions?





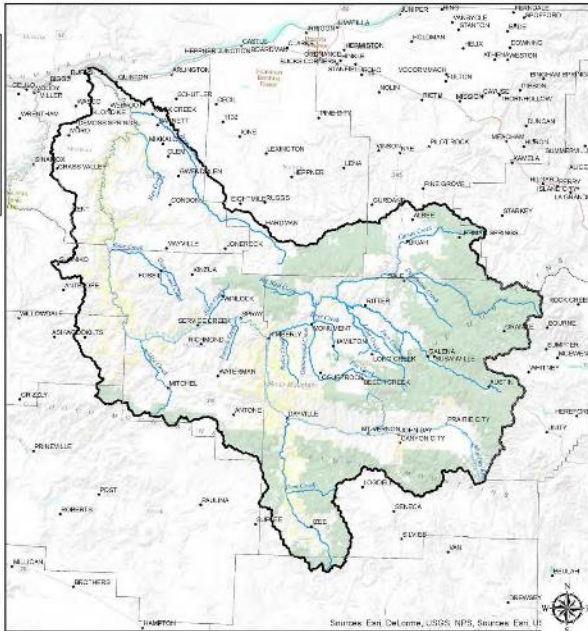
# John Day Basin Native Fish Habitat Initiative

**OWEB FIP Priority**

**Aquatic Habitat for Native Fish Species**

# John Day River Basin

## John Day Basin - Overview





## Focal Species

ESA-listed Mid-C summer steelhead

ESA-listed bull trout

Chinook salmon

Pacific lamprey

Mule deer

## Purpose

To bring stakeholders from across the basin to apply deep knowledge of the basin, best available science, and cooperative planning to support actions that establish healthy and resilient native habitats, working landscapes, and local communities for future generations.

## Ridgetop-to-Ridgetop Habitat Restoration

## 30 Total Partners

8 Federal Partners

3 State Agencies

3 Tribes

6 Soil & Water Conservation Districts

4 Watershed Councils

6 Conservation Groups

**John Day Basin  
Strategic Action  
Plan**

*Ridgetop-to-Ridgetop  
Watershed Restoration*



**Partnership Governance,  
Structure, and Process**

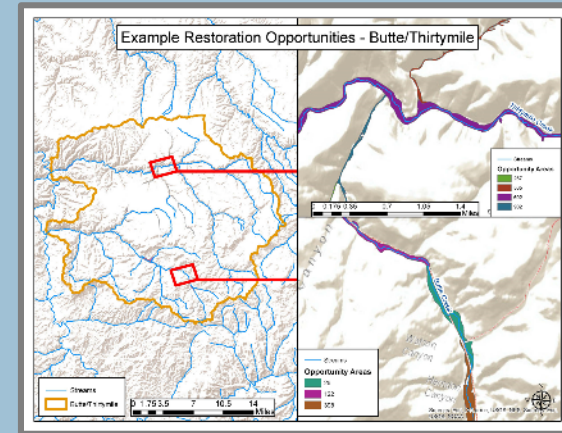
**Uplands  
Habitat  
Restoration  
and  
Conservation**

**OWEB FIP:  
John Day  
Basin Native  
Fish Habitat  
Initiative**

**Aquatic Habitat  
Restoration and  
Conservation in  
Non-FIP  
Geographies**

# Strategic Action Plan Implementation

John Day Basin Partnership (JDBP) Strategic Action Plan & Atlas Prioritization



JDBP Project Planning and Development

JDBP Steering Committee Ranking and OWEB Technical Review

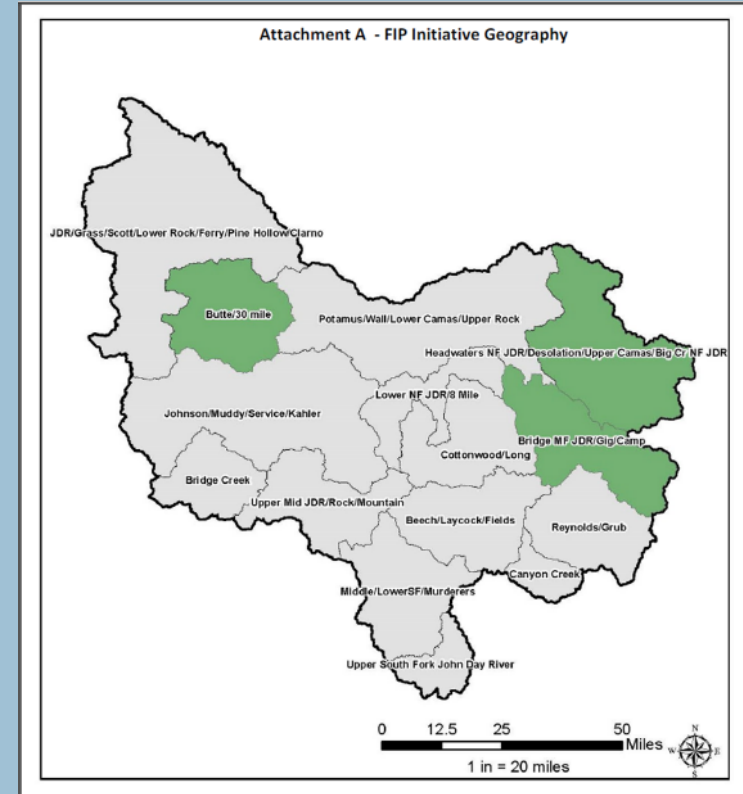
Implementation

Progress Monitoring, Results Chain Model, and Adaptive Management



# OWEB FIP: John Day Basin Native Fish Habitat Initiative (2019-2025)

Through the OWEB FIP program, the JDBP was awarded \$4 million for the first biennium (2019-2021) to support fish habitat restoration and monitoring in the John Day River basin to benefit steelhead, spring Chinook salmon, bull trout, and other native fish species in three Focal Geographies.



### FIP Focal Geographies:

- (1) Upper North Fork
- (2) Upper Middle Fork
- (3) Butte/Thirtymile





# OWEB FIP Biennium 1: Implementation Outputs

A total of 35  
stream miles  
were treated  
in the three  
FIP  
geographies in  
Biennium 1

Allocated OWEB Funds: \$4M  
Leveraged Funds: \$6.3M

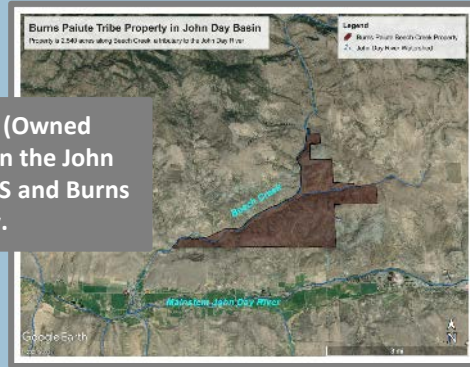
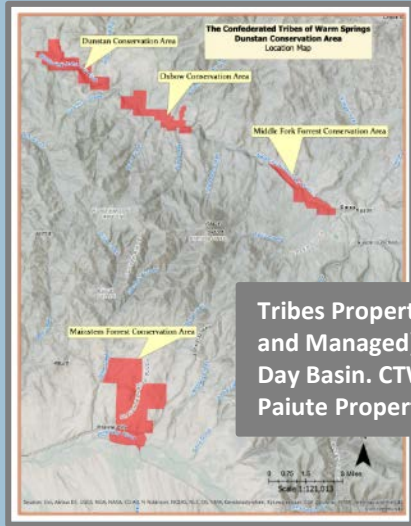
1,490  
instream  
habitat  
structures  
installed

1,030 acres of floodplain  
habitat protected

50 LWD  
structures  
installed on  
the floodplain

A total of 187 stream miles surveyed and 1,638 sq. miles of new LiDAR acquired

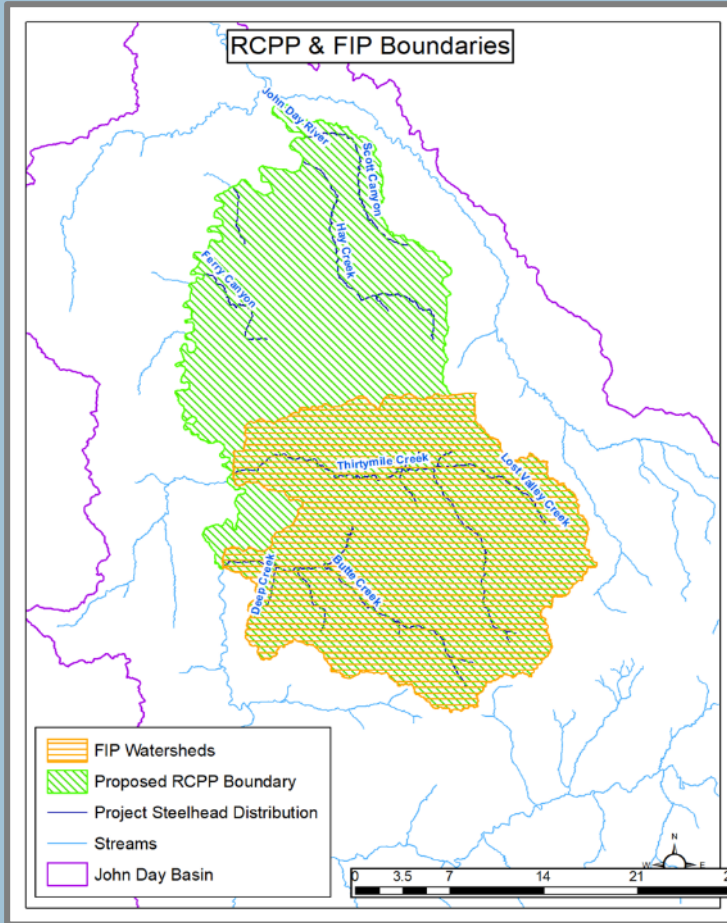
# Pairing Restoration with Permanent Protection



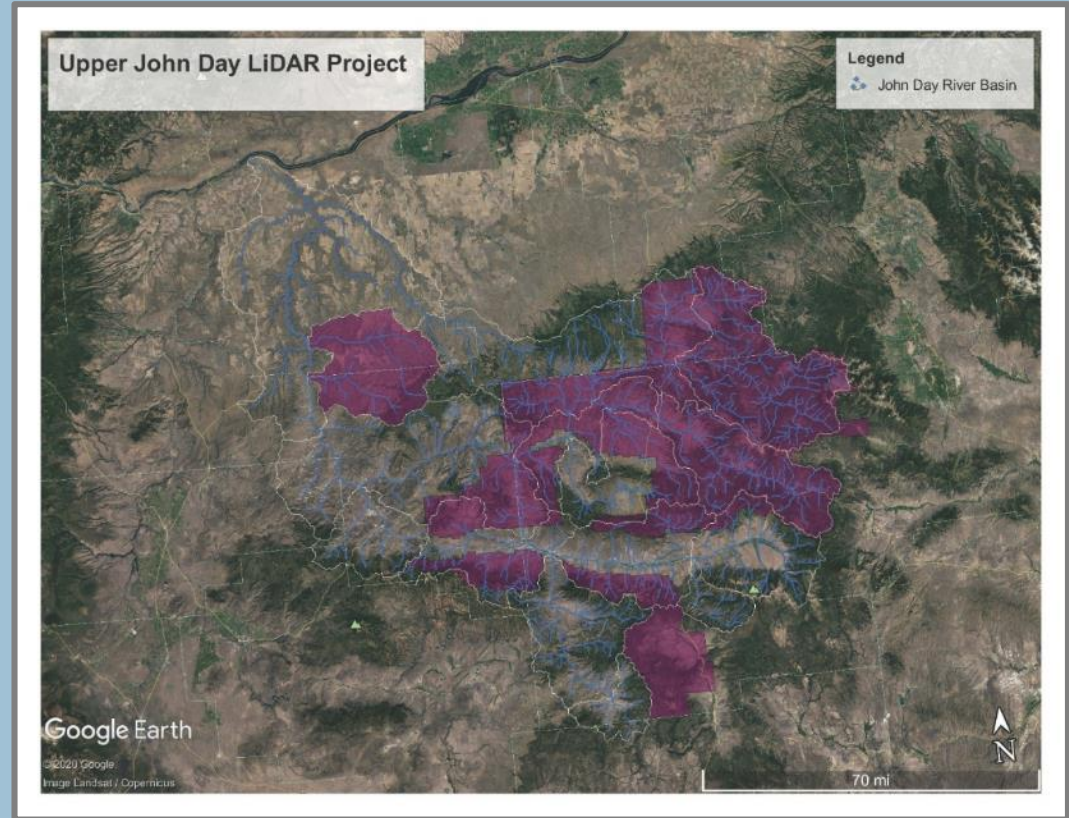
The 6,783 acre Canyon Creek Ranch is located in Mitchell, Oregon adjacent to the Painted Hills National Monument. The property takes in 3.1 miles of Bear Creek, spawning and rearing habitat for Mic-C summer steelhead and Chinook.



# JDBP FIP: Leveraged Funds

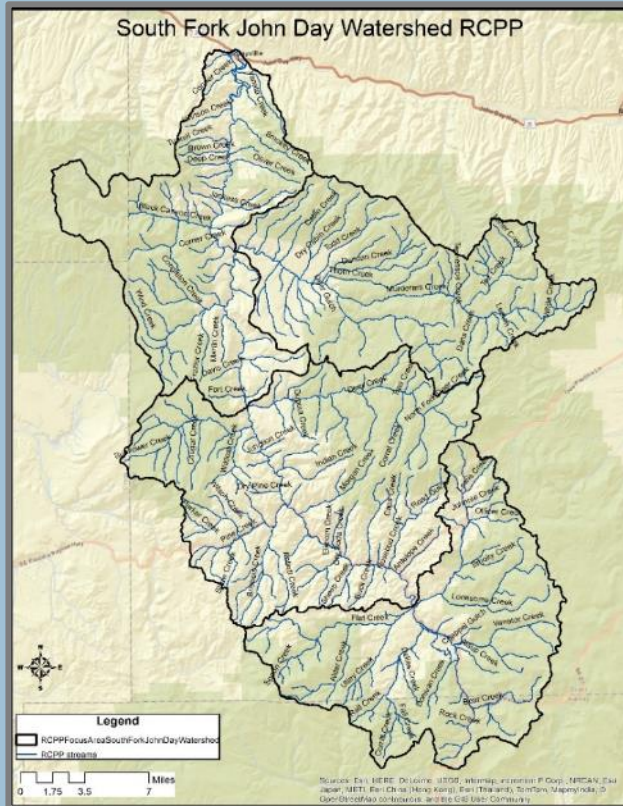


The Lower John Day Canyons  
Restoration Initiative  
RCPP Award of \$3.9M



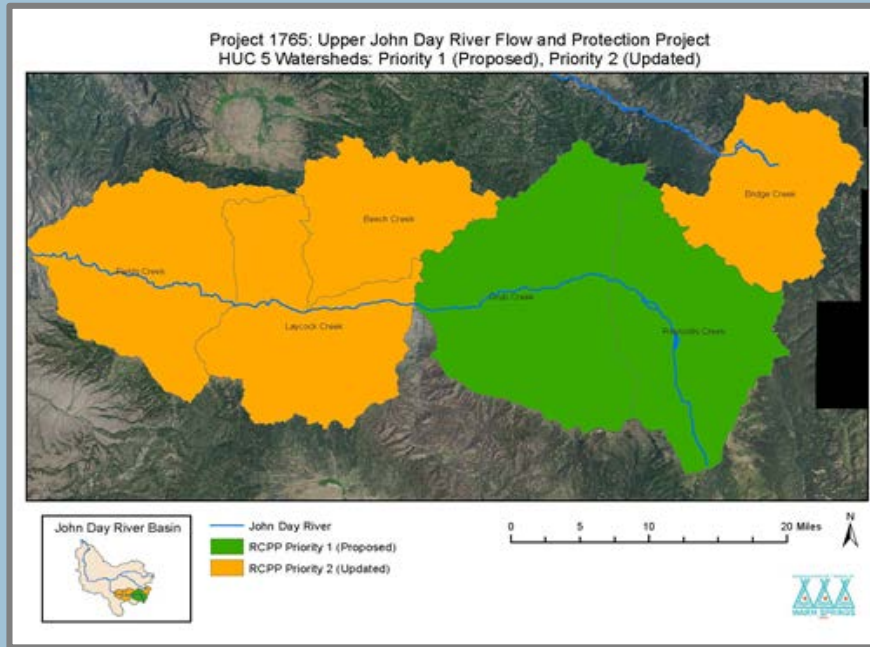
Upper John Day LiDAR Project  
FEMA, USGS, and NRCS contributed a total of \$1.1 million for LiDAR acquisition in the Upper John Day.

# JDBP Non-FIP: RCPP Leveraged Funds



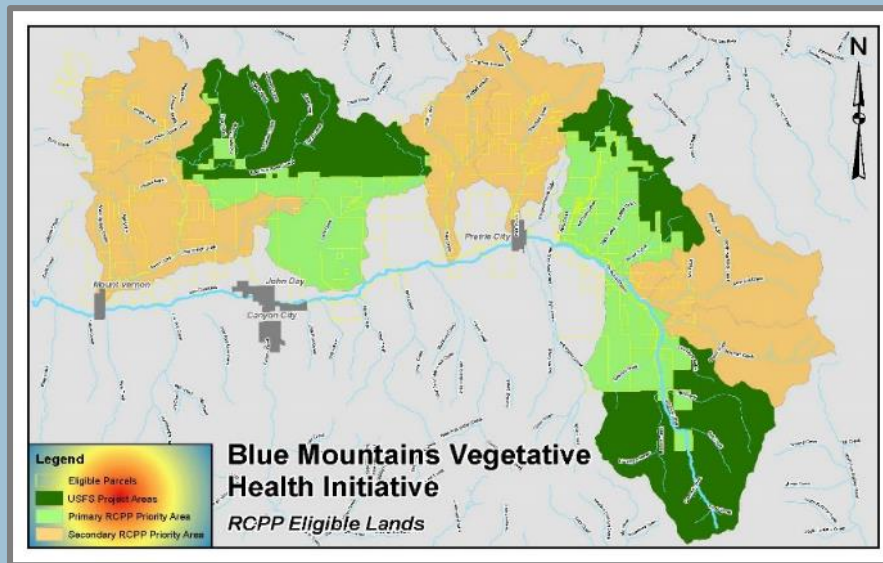
South Fork John Day Watershed Restoration

RCPP Award of \$1.7M



Upper John Day River Flow and Protection Project

RCPP Award of \$4.9M



Blue Mountains Vegetative Health Initiative

RCPP Award of \$1.6



**Thank you for your time and the  
opportunity to share the work  
partners are doing around the John  
Day Basin!**

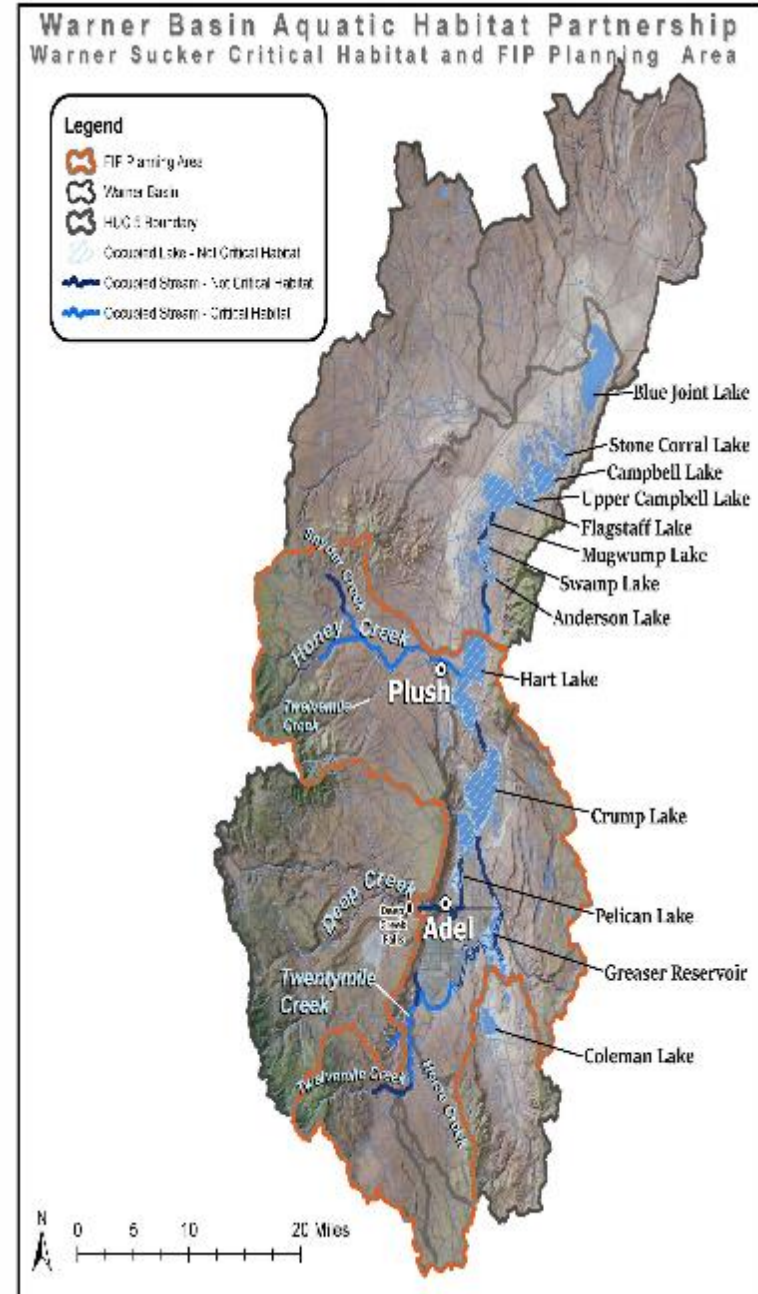
# Warner Basin Fish Passage & Habitat Improvement Initiative



**Brandi Neider**  
*Coordinator*



# The Warner Basin



# Background



# The Recovery Plan for the Threatened and Rare Native Fishes of the Warner Basin and Alkali Subbasin (USFWS 1998)

1. **Self sustaining metapopulation distributed throughout** Twentymile Creek, Lower Deep Creek, Honey Creek.
2. **Passage is restored** within Twentymile, Lower Deep, and Honey Creeks so individual populations of Warner sucker can function as a metapopulation.
3. **No threats exist that would likely threaten the survival** of species over a significant portion of its range.



State listed sensitive  
Federally listed species of concern



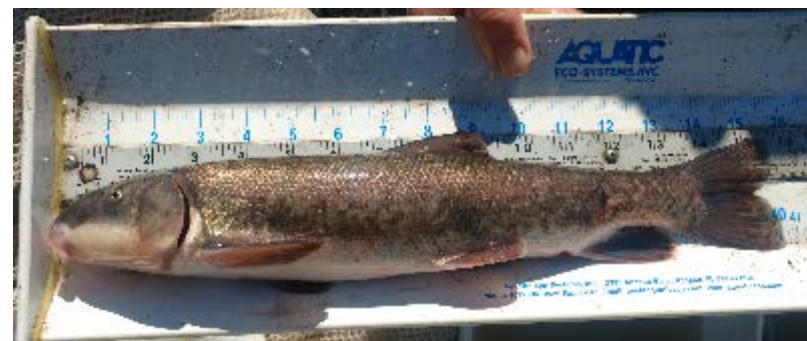
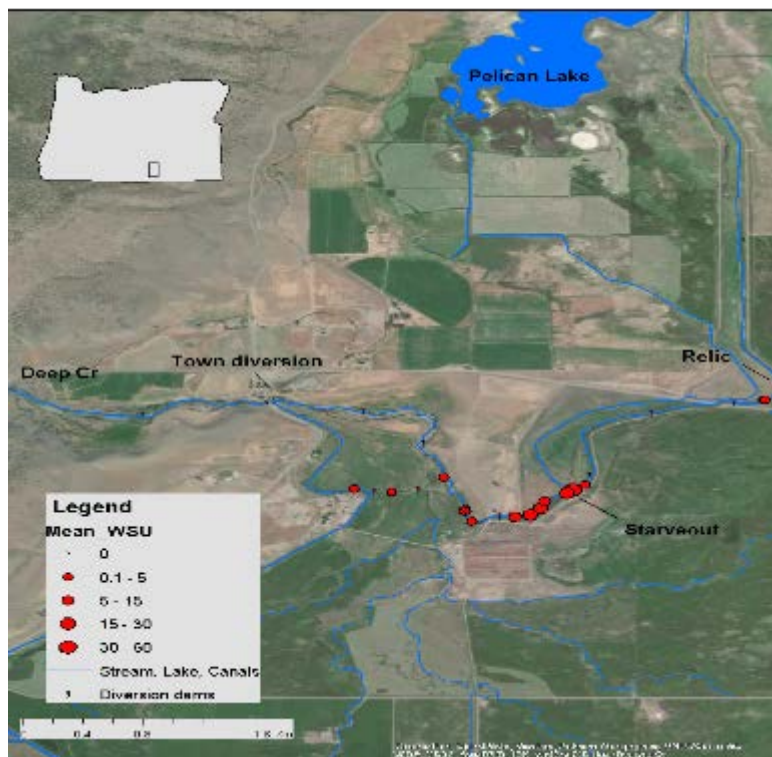
Federally listed  
"threatened" 1985

# Strategies



# Monitoring

- Passage Effectiveness
- Metapopulation Function
- Inter Tributary Movement
- Abundance Estimates



Crump Lake WSU 2020

# Accomplishments



# Relict Weir Fish Passage (2020)

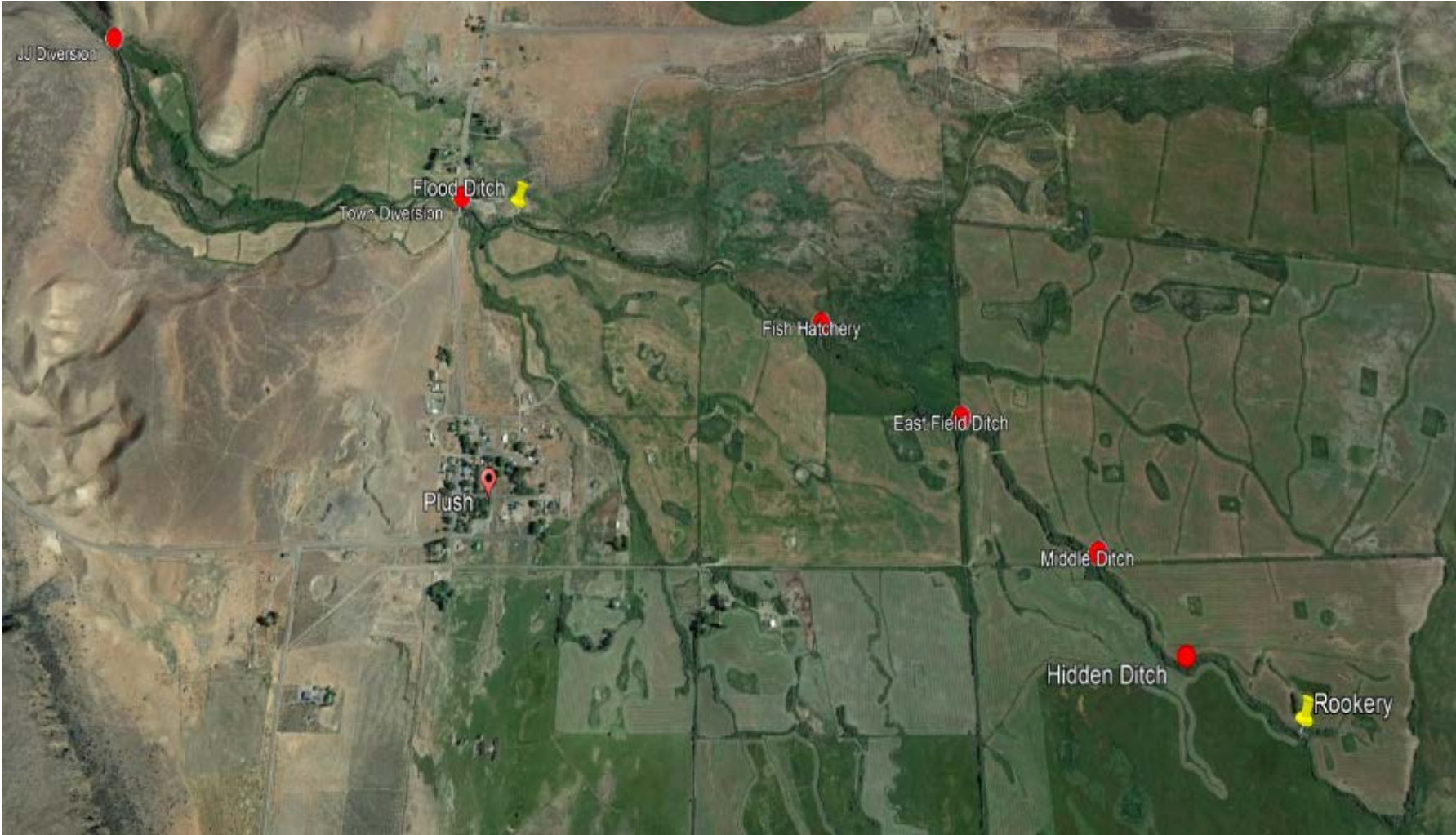


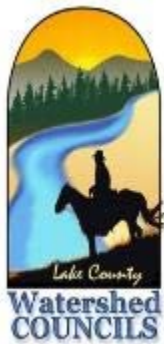
*Deep Creek*

# Deep Creek Diversions



# Honey Creek Diversions





***“Alone we can do so little;  
together we can do so much.”***

- Helen Keller



**AWID  
Adel Water  
Improvement  
District**



**WESTERN  
NATIVE  
TROUT  
INITIATIVE**